



## **Update to the supporting information for the Special Policy Area relating to cumulative impact in Portsmouth**

**2013/14**

### **Background**

The aim of this report is to provide updated information about the extent and nature of violent crime in the Special Policy Area (SPA) which is centred around the Guildhall area.

An SPA can provide grounds for rebuttal for applications for new licenses or variations to existing licenses unless the applicant can demonstrate that there will be no negative impact on one or more of the licensing objectives.<sup>1</sup>

The SPA is a very specific area relating to the following roads: Alec Rose Lane, Cambridge Road, Commercial Road, Guildhall Square, Guildhall Walk, Hampshire Terrace, King Henry 1<sup>st</sup> Street, Stanhope Road, St Michaels Rd, White Swan Road, Willis Road, Wiltshire Street. Although this is similar to the Evening and Late Night Economy Partnership (ELNEP) areas of Guildhall and Commercial Road there are differences in the roads included and the time parameters and so the exact numbers of offences in the SPA will differ.

There are currently 15 licensed premises in the SPA: Astoria, Brew House, Club 8, Fleet/Pop World, Fuzzy Duck/Heaven Sent, Hampshire Boulevard, Isambard Kingdom Brunel, Liquid and Envy, Lyberry Bar, Portsmouth Guildhall, Scandals, Sky Bar, The Student Union, The Trafalgar and Yates Wine Lodge.

### **Violence in Portsmouth**

Violent crime consists largely of assaults but also includes most serious violence, harassment, public order, robbery and sexual offences and accounts for 29% of the total crime in Portsmouth in 2013/14.

In 2013/14, 4,870 violent offences were reported to police which was 8% (n395) less than the previous year and 22% less than the baseline year of 2007/08 (n1,384).<sup>2</sup> However, the

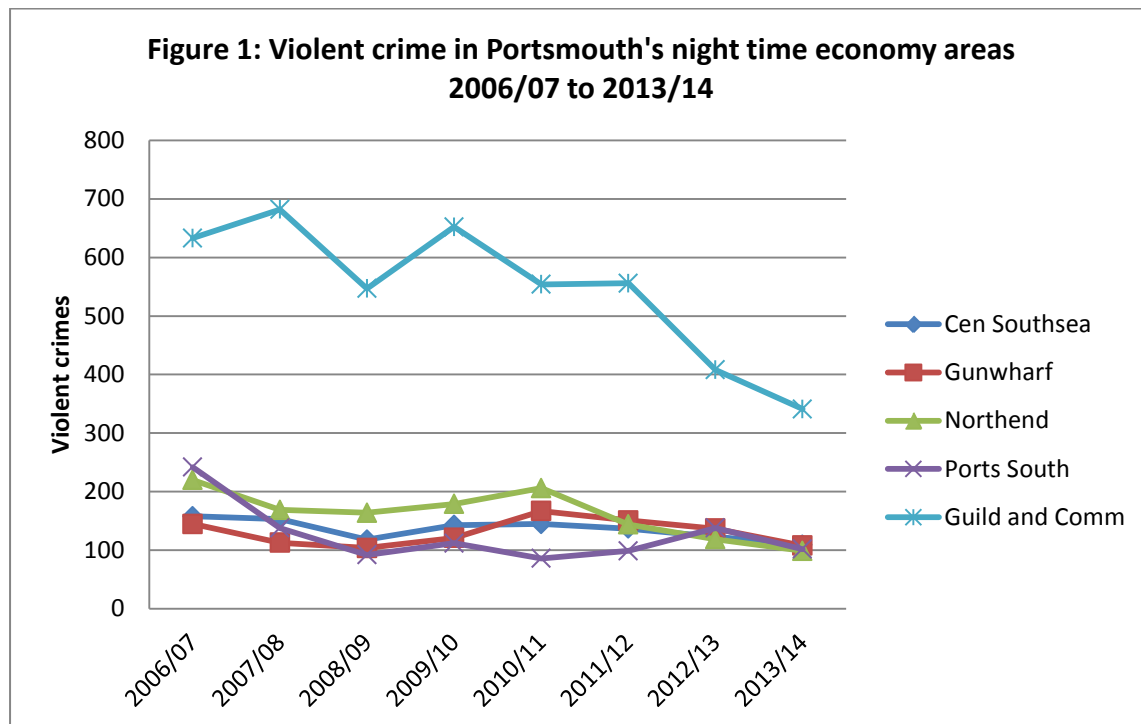
---

<sup>1</sup> See Portsmouth City Council 'Licensing Act 2003 - Statement of licensing Policy' 2011 for further details about Licensing policy.

<sup>2</sup> From iQuanta website: <https://iquanta.projectfusion.com> accessed July 2014.

rate of violent crime for Portsmouth is 23.5 per 1,000 and is higher than the average rate for other similar areas<sup>3</sup> (20.4 per 1,000 - ranging from 11 to 25.9).

Using the local ELNEP parameters<sup>4</sup> (See appendix A) there were 759 violence crimes in the night time economy (NTE) during 2013/14. This is an 18% (n166) reduction from 2012/13 and almost 40% (n496) fall since 2007/8. More violent crimes occur in the Guildhall and Commercial Road areas than the other key NTE areas, but this area has seen the largest percentage reduction since 2007/08. This is likely to be at least in part due to partnership work and focus on this area. There are also a few premises which are currently closed but could re-open which could be contributing to this reduction.



Between April and October 2013, there were 1,107 night-time (21.00-05.00) ambulance call-outs in the Portsmouth area. Of these, at least 37.5% (n415) were alcohol related, which represents a 39.3% (n117) increase on the same period in 2012 (n298). The highest proportion (16.2%, n67) of alcohol related, night-time call-outs in 2013 came from the 'PO1 2' postcode area (an area which includes the Guildhall night time economy area). This represents a 97.1% (n33) increase from 2012 (11.4%, n34).

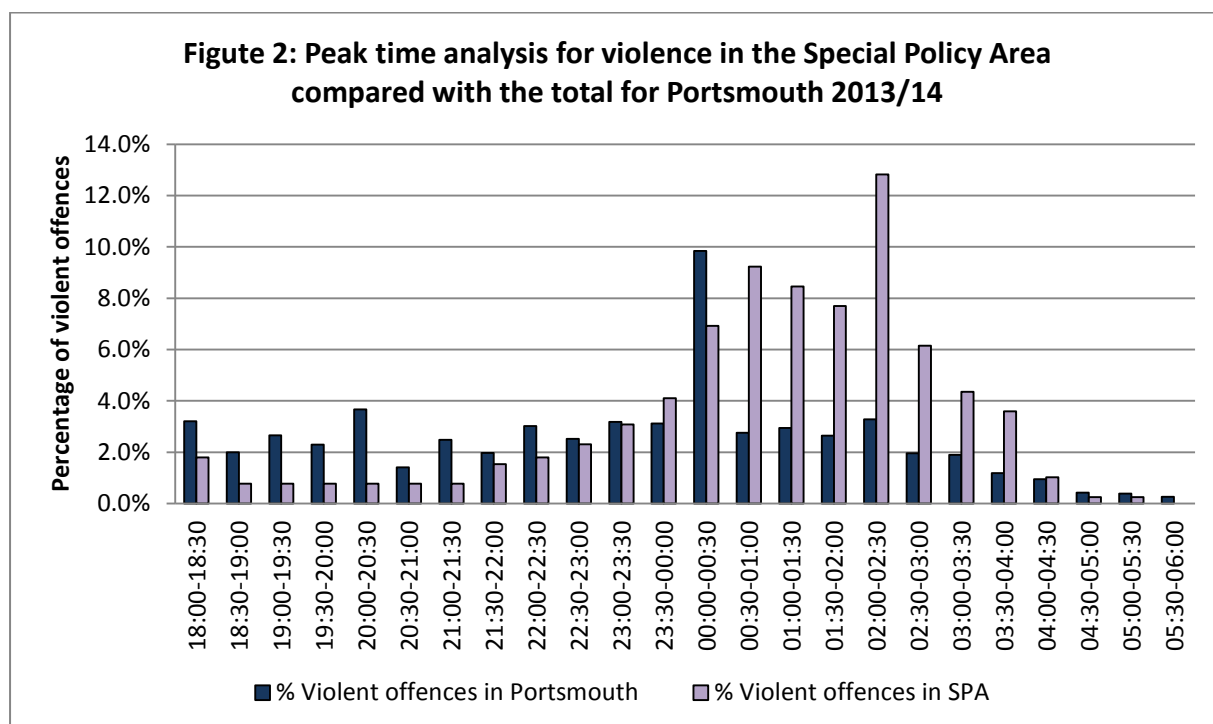
<sup>3</sup> SPP similar areas are Brighton & Hove, Bristol, Bournemouth, Plymouth, Portsmouth, Southend-On-Sea, Sheffield and Southampton.

<sup>4</sup> Please contact the [csresearchers@portsmouthcc.gov.uk](mailto:csresearchers@portsmouthcc.gov.uk) for further information about the ELNEP parameters or refer to Appendix C of the Safer Portsmouth Partnership Update to the Strategic Assessment of Crime, Anti-social behaviour, substance misuse and re-offending.

## Analysis of violence in the SPA

A total of 390<sup>5</sup> violent offences took place in the SPA in 2013/14. This is approximately 8% of all violent crime which occurred in Portsmouth. Most of these (80%, n312) offences took place in the evening and night, between 6pm and 6am. This is a larger proportion than for Portsmouth as a whole, where 60% (n2980) offences took place in the evening or night.

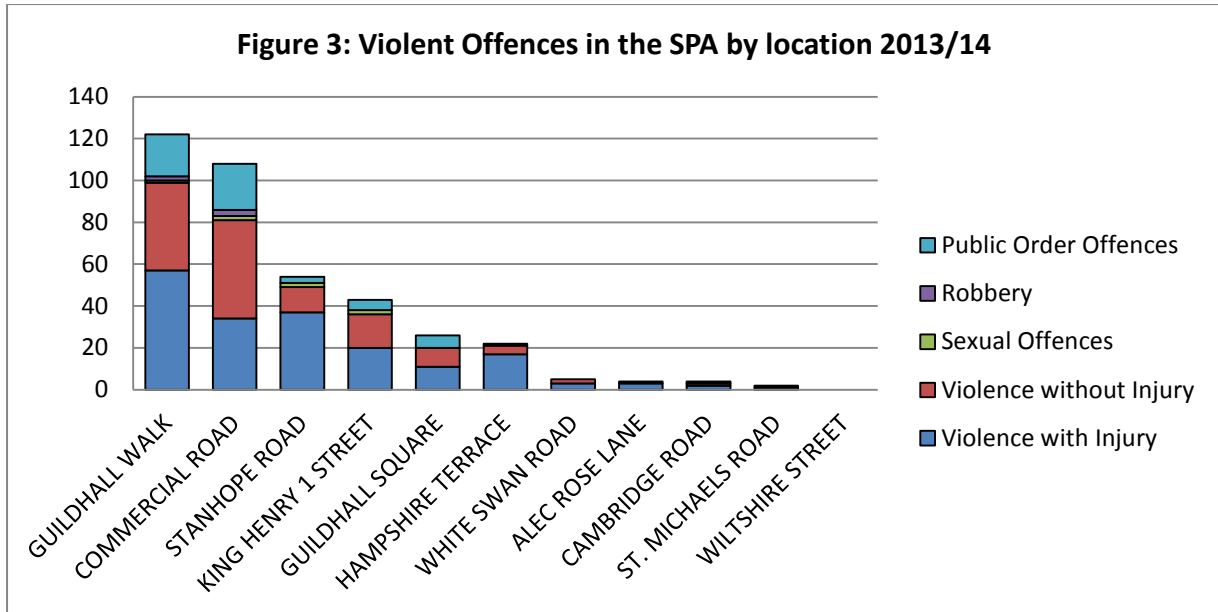
As can be seen from Figure 2 below, a much larger proportion of violence in Portsmouth occurs between midnight and 12.30am than at any other time. The pattern of violence is different in the SPA where violent crime builds up to the first peak at 12.30am, drops slightly then experiences a much larger peak at between 2 and 2.30am.



Offences in the SPA peaked significantly over the weekend with most offences occurring on Saturday (27%, n104) and Sunday (21%, n83). The high proportion on Sunday is due to many offences taking place in the early hours of the morning after a Saturday night out.

Most violent offences in the SPA took place in Guildhall Walk and Commercial Rd (see Figure 2 below). These offences were largely violence with and without injury, and public order offences.

<sup>5</sup> The data in this report was provided by Hampshire Constabulary's Eastern Area Research Team but the analysis was conducted by the SPP Community Safety Research Team unless otherwise stated.



## Conclusion

In summary, although we have seen reductions in violence across Portsmouth in the last few years, we still have a higher rate of violence than many other similar areas. Guildhall and Commercial Road account for the highest proportion of violence of all the night time economy areas.

The reductions in violence that have been seen in the SPA are likely to be due to partnership working in the area and closure of some premises. Furthermore, data from the ambulance service has shown an increase in alcohol related call-outs in the postcode area which includes Guildhall Walk and Commercial Road. Therefore, it is recommended that all partners maintain their focus on this area and that it remains an SPA.

## Appendix A - Late Night Economy parameters (Previously ELNEP)

ported HO Class Code	ported Short HO Class Desc
104/25	ASSAULT A DESIGNATED PERSON OR HIS ASSISTANT IN THE EXERCISE
8/6	ASSAULT OCCASIONING ACTUAL BODILY HARM
104/23	ASSAULT ON CONSTABLE (POLICE ACT 1996)
34/22	ASSAULT WITH INTENT TO ROB ~ PERSONAL
105/8	ASSAULTING A DESIGNATED OR ACCREDITED PERSON IN THE EXECUTIO
8/31	BREACH OF RESTRAINING ORDER
125/9	CAUSE INTENTIONAL HARASSMENT, ALARM, DISTRESS
5/11	CAUSING DANGER TO ROAD USERS
105/1	COMMON ASSAULT AND BATTERY
88/9	EXPOSURE-INTENTIONAL-MALE OR FEMALE GENITALS
125/11	FEAR OR PROVOCATION OF VIOLENCE
195/94	HARASSMENT (PROTECTION FROM HARASSMENT ETC)
125/12	HARASSMENT, ALARM OR DISTRESS
8/26	HAVING AN ARTICLE WITH A BLADE OR POINT IN A PUBLIC PLACE
24/19	KEEPING A BROTHEL USED FOR PROSTITUTION
8/11	POSSESS OFFENSIVE WEAPON WITHOUT LAWFUL AUTHORITY OR REASC
125/58	PRE 1/4/10. RACIALLY AGGRAVATED HARASSMENT, ALARM OR DISTRES
19/8	RAPE OF FEMALE OVER 16 YEARS
34/21	ROBBERY PERSONAL
22/12	SEX ACTIVITY WITH A FEMALE CHILD UNDER 16 - PENETRATION - OF
20/6	SEXUAL ASSAULT OF A FEMALE CHILD UNDER 13
20/5	SEXUAL ASSAULT ON A FEMALE 13+
20/3	SEXUAL ASSAULT ON A FEMALE 13+ BY PENETRATION
17/15	SEXUAL ASSAULT ON A MALE AGED 13+
17/13	SEXUAL ASSAULT ON A MALE AGED 13+ BY PENETRATION
17/16	SEXUAL ASSAULT ON A MALE CHILD UNDER 13
3/1	THREATS TO KILL
8/60	WEF 1/4/10. RACIALLY AND/OR RELIGIOUSLY AGGRAVATED ABH (8J).

8/57	WEF 1/4/10. RACIALLY AND/OR RELIGIOUSLY AGGRAVATED COMMON AS
66/91	WEF 1/4/10. RACIALLY AND/OR RELIGIOUSLY AGGRAVATED FEAR/PROV
8/56	WEF 1/4/10. RACIALLY AND/OR RELIGIOUSLY AGGRAVATED HARASSMEN
125/82	WEF 1/4/10. RACIALLY AND/OR RELIGIOUSLY AGGRAVATED HARASSMEN
8/55	WEF 1/4/10. RACIALLY AND/OR RELIGIOUSLY AGGRAVATED INTENTION
8/1	WOUND OR INFLICT GBH WITH OR WITHOUT WEAPON
5/1	WOUNDING WITH INTENT TO DO GBH

**Measured between: 20.00 – 05.00**

In the following areas:

**Guildhall Square:** Alec Rose Lane, Dorothy Diamond Street, Guildhall Square, Guildhall Walk, King Henry 1<sup>st</sup> Street, White Swan Road, Winston Churchill Avenue.

**Commercial Road:** Commercial Place, Commercial Road, Edinburgh Road, Stanhope Road.

**Central Southsea:** Albert Road, Albert Grove, Elm Grove, Highland Road, Fawcett Road, Victoria Grove, Duncan Road

**Portsmouth South:** Clarendon Mews, Clarendon Place, Clarendon Road, Granada Road, Palmerston Road, South Parade (incl Pier), Osbourne Road

**Gunwharf:** Gunwharf Keys, Gunwharf Road, The Canalside, The Plaza (East Side Plaza), The Hard, The Waterfront, Central Square, Gunwharf Quays Plaza, Vulcan Square, Ordnance Row, St George's Road.

**Northend:** Fratton Road, Kingston Crescent, Kingston Road, London Avenue, London Road